

PDC Smart[®] Woven Wristband



PDC Smart[®] Woven wristbands are the ultimate multi-day, high-security event management solution. The unique combination of precise, multi-color weaving of custom graphics; high-strength plastic closure; and RFID slider maximize security while preventing transfer and counterfeiting.

www.pdcsolutions.com

PDC Smart® Woven Wristbands

Wristband:

- **Material:** Made of a special mix of nylon and cotton materials
- **Custom Weaving:** Choose up to 8 PMS thread colors per wristband design. See specifications on next page.
- **Dimensions:** 1.6 cm W x 36 cm L

RFID Slider:

- **Material:** Waterproof, durable vinyl material with enclosed RFID chip to reliably store and transfer data
- Available in any PMS color.
- **Custom Printing:** Add your custom printed logo with up to 4 PMS spot colors.
- Laser etched serial numbering optional on RFID slider
- **Dimensions:** 2.4 cm W x 3.8 cm L

4 Closure Options - See next page for details

Quantity: 50 per pack. Minimum order 500 wristbands per design

Lead time: 3 weeks from artwork approval. Orders over 1,000 units may take up to 45 days from artwork approval.



Part Number	RFID Inlay	ISO #	Closure
RC100-XX-PDF-I	ICODE SLI	ISO 15693-3	High Security Closure
RC102-XX-PDF-I	ICODE SLI	ISO 15693-3	Reusable Spring Closure**
RC104-XX-PDF-I	Mifare 1K	ISO 14443A	High Security Closure
RC108-XX-PDF-I	ICODE SLI	ISO 15693-3	Reusable Bead Closure*
RC110-XX-PDF-I	ICODE SLI	ISO 15693-3	SecurLock™ Closure

See RFID tag specifications on back cover and closure details on the next page. Other tag types or closures available upon request.

Color Closure Options:

Substitute “XX” for colored closure option:

WHITE 11	YELLOW 14	BLACK 20	GRAY 26
HOT PINK 27	AQUA 35	DAY GLOW GREEN 39	MANGO MELON 94

Actual closure colors may vary, especially day glow colors

*Reusable Bead Closure only available in White (11) and Black (20)

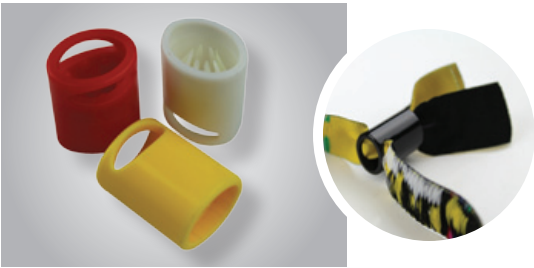
** Reusable Spring Closure only available in White (11), Yellow (14), Black (20), Gray (26) and Hot Pink (27)



PDC Smart® Woven Wristband Principal Applications:

- Access Control & Security
- Social Media Integration
- Cashless Payments
- Event Analytics

Closure Options:



New! SecurLock™ Closure

PDC's patent-pending, one-way sliding plastic closure features a dual thread, anti-twist design and eight gripping teeth that lock the woven wristband into its secured position. It's the ultimate anti-transfer closure!



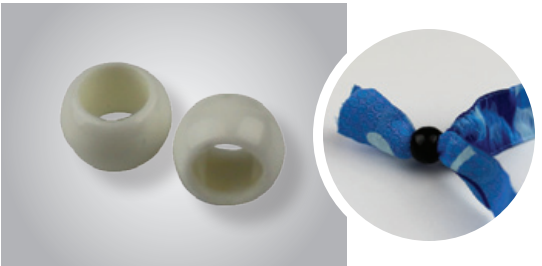
High Security Closure

This standard high-strength, one-way sliding plastic closure includes eight teeth to firmly grip the woven wristband into its secured position.



Reusable Spring Closure

Enables the woven wristband to be readjusted for re-use. Ideal for applications where transfer is not an issue. Includes stopper at tail to ensure closure remains on the wristband.



Reusable Bead Closure

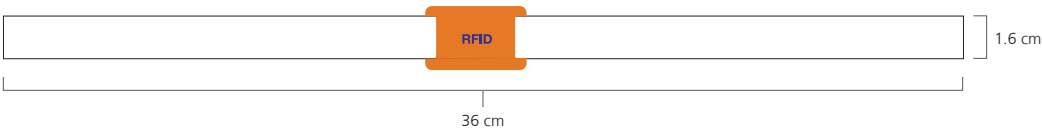
The economical closure option. Effortlessly slides up and down the wristband to be readjusted for re-use. Use for applications where transfer is not an issue.

Woven Wristband Custom Specifications:



PDC Smart® Woven Wristbands feature precise, multi-color weaving of your custom artwork. Intricate details including your company logo, message, and graphics are achieved with eye-catching results.

- Select up to 8 PMS thread colors per wristband design.
- **Artwork Dimensions:** 36 cm L x 1.6 cm W
- See artwork specifications on back cover.

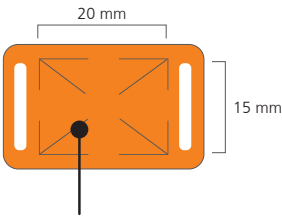


When designing your wristband, note that the RFID slider will cover artwork placed in the center of the wristband.

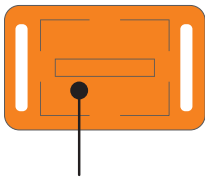
RFID Slider Custom Imprint Specifications:



- **Front:** Custom print with up to 4 PMS spot colors per RFID slider design. Artwork dimensions: 20 mm L x 15 mm W
- **Back:** Optional laser etched serial numbering on back of slider.
- See artwork specifications on back cover.



Front: Custom print area



Back: Serial numbering area

Artwork Specifications:

Spot Color Specifications:

- CLEAN, BLACK AND WHITE LINE ART is required
- Tones and screens need to be converted to solids
- Broken lines, weak lines, or smeared art cannot be imprinted
- Outline all fonts in the artwork files



No tones or screens
(gray area)



No faxed art or
art with broken or
weak lines



Artwork must be clean,
black & white line art

Preferred File Formats			
Format	Extension	Description	Note
EPS	.eps	Illustrator encapsulated post script	Convert text to outlines
AI	.ai	Adobe Illustrator	Convert text to outlines
TIFF	.tif	Tagged image file format	300-600 dpi or higher
JPG	.jpg	Joint Photographic Experts Group	300-600 dpi or higher

Note: If artwork is not supplied in the proper format and requires additional graphic design work, you may be billed for art charges.

No Logos / Artwork from a Website

We cannot use logos/artwork that are copied from a website as these images are low resolution and will produce a jagged, pixilated imprint with poor quality results.

E-Mail your Artwork

You may e-mail your artwork to **artwork@pdc corp.com**. Please include your company name, order number, contact name and phone number in your e-mail message.

Upload your Artwork Online

To upload your artwork through our website, go to **www.pdcsolutions.com/artwork**. Simply attach your artwork file.

Artwork Archives

We are happy to keep your wristband artwork on file for future re-orders. This will save you time and money. Please note, however, that if artwork is not used within a two year period, the archive artwork will be destroyed.

RFID Specifications:

	ICODE SLI	Mifare 1K
Operating Frequency	13.56 MHz	13.56 MHz
EEPROM Size	128 byte (1024 bit)	1024 byte (8192 bit)
Memory Organization	32 blocks, 4 bytes per block	16 sectors, 4 blocks of 16 bytes
Unique Serial Number (UID)	8 byte (64 bit)	4 byte
RF Interface	ISO 15693-3	ISO 14443A
Data Retention (years)	10	10
Write Endurance (cycles)	100,000	100,000
Read/Write Range	2.4" / 6 cm	1.5" / 3.8 cm

North America & Latin America

U.S. Headquarters
27770 N. Entertainment Drive, Suite 200
Valencia, CA 91355
Tel: 866.403.6526
Tel: 661.257.0233 ext 1556
Fax: 818.686.9336
Email: rfid@pdcsolutions.com

Asia Pacific

Tel: +1.661.257.0233
Fax: +1.818.686.9317
Email: asia@pdcsolutions.com

Europe, Middle East & Africa

European Headquarters
Rue de l'Industrie, 17
1400 Nivelles, Belgium
Tel: +32 67 89 56 56
Fax: +32 67 21 77 70
Email: info@pdcsolutions.eu
Web: pdcsolutions.eu

